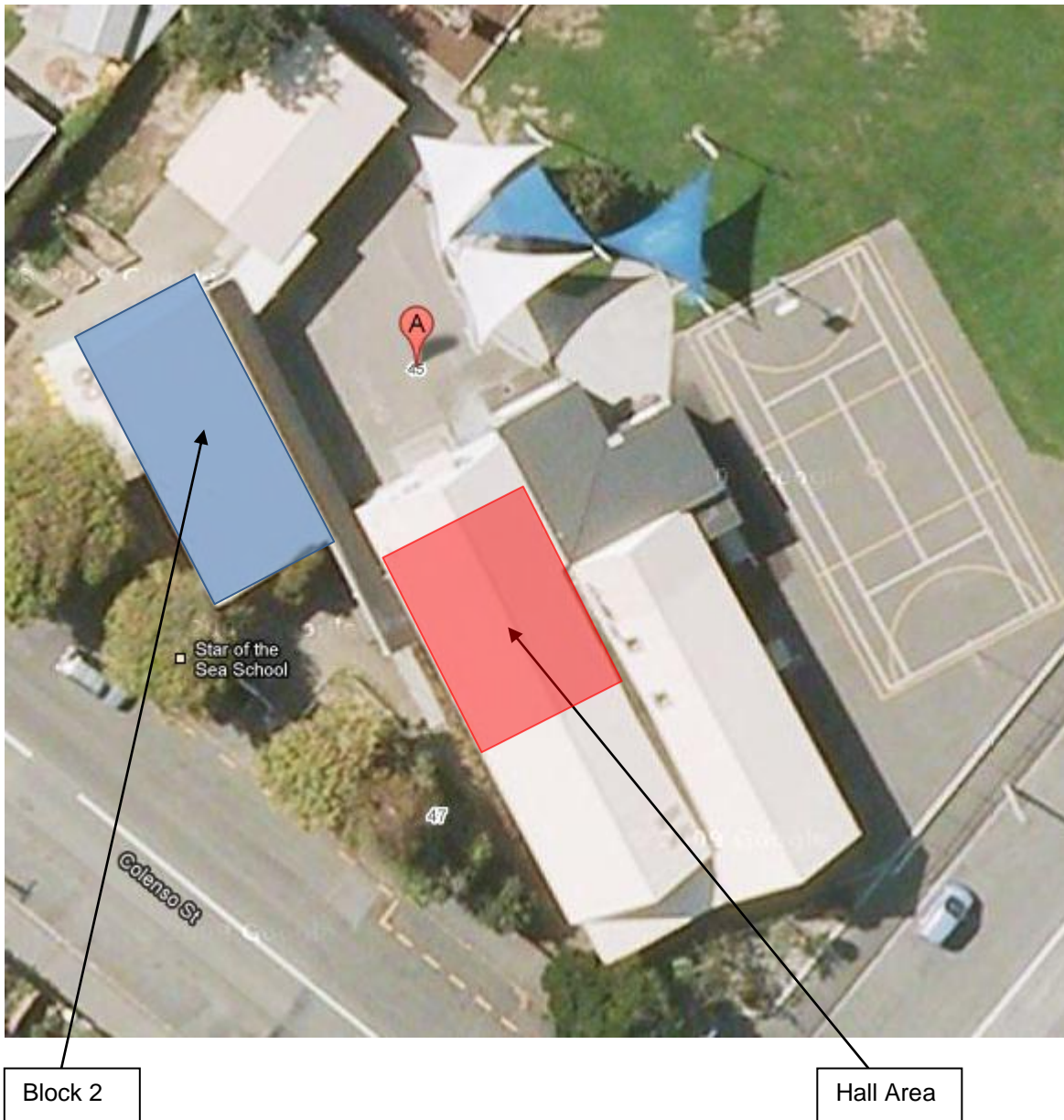


Our Lady Star of the Sea School (Sumner)



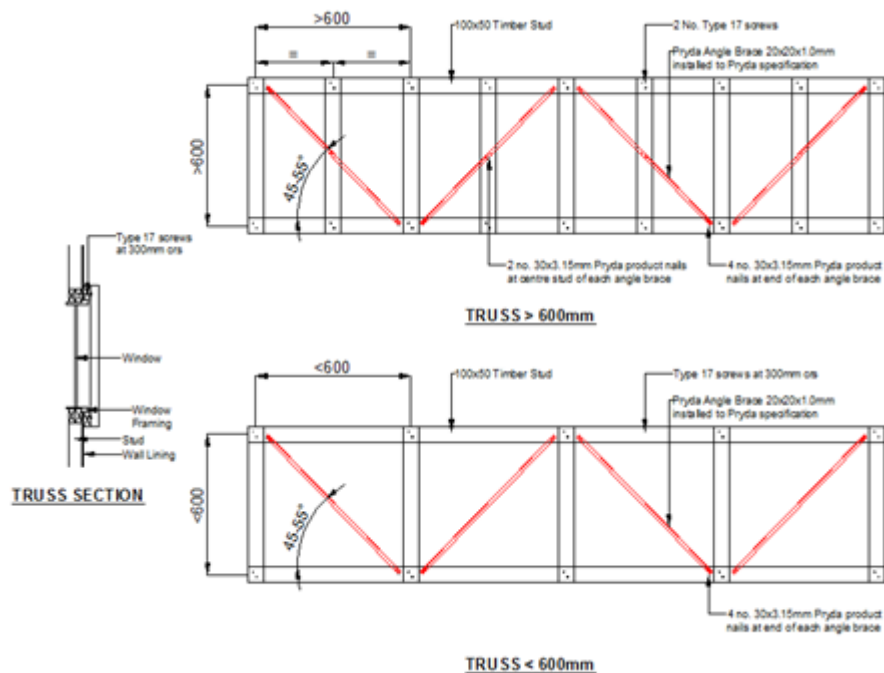
During the course of the yet to be completed detailed engineering evaluation (DEE) of Our Lady Star of the Sea School, the structural engineers from Opus International Consultants have determined Block 2 (excluding the shed) to be earthquake prone and that the Hall area of Block 1 also requires strengthening. Both areas require remedial work in order to meet appropriate building standards.

The structural engineers have alerted the Catholic Diocese of Christchurch to this preliminary finding, and the Diocese has determined that both areas are to be closed for occupancy forthwith.

The classrooms, library and toilets in Block 1 are not earthquake prone and remain open for occupation.

The following actions will be undertaken:

1. Hann Construction will be on site on Friday 14th September 2012 to commence the appropriate bracing work that the structural engineers from Opus International have detailed and specified.
2. The strengthening scheme involves installing composite timber and steel angle trusses (externally) over windows; this will increase the capacity of the bracing line along the western elevation of Block 1 and both the eastern and western elevations of Block 2.



3. This bracing work will improve the seismic capacity of the Hall area of Block 1 to 63% and Block 2 to 50% of the new building standard.
4. When this bracing work has been completed Block 2 will no longer be considered earthquake prone and both areas will be able to be re-occupied for teaching and learning.
5. It is anticipated that this bracing work will be completed by 4pm on Sunday 16th September 2012.

Mike Nolan
Manager
Catholic Education Office
12 September 2012